



# PALO VERDE COLLEGE

Education Master Plan / Facilities Master Plan

October 2015

CW/P + hpi architecture

# THE TEAM

---

## Palo Verde College

Blythe, California

- ❖ **Palo Verde Community College**

## Cambridge West Partnership

Irvine, California

- ❖ **C.M. Brahmbhatt**  
Senior Partner & Manager
- ❖ **Joyce Black**  
Senior Partner & Project Leader
- ❖ **Dr. Fred Trapp**  
Educational Master Plan Leader

## HPI Architecture

Newport Beach, California

- ❖ **Lawrence Frapwell**  
President & Principal-in-Charge
- ❖ **Megan Gaunce**  
Facilities Planning Project Leader



**Palo Verde Community College**  
Education Master Plan / Facilities Master Plan



CW/P + hpi architecture

# OUR EXPERIENCE

---

## Cambridge West Partnership

Irvine, California

- ❖ Participated in the development of over **20 Educational/Facilities Master Plans & 5 Educational Centers**
- ❖ Experienced in **Bond Development & Planning**
- ❖ Support for **Accreditation & Educational Master Planning**
- ❖ Preparation of **5YCP, Report 17, IPP's & FPP's**
- ❖ Excellent Reputation at the **Chancellor's Office**
- ❖ Have qualified over **\$600 million** for **State Funding**

## HPI Architecture

Newport Beach, CA

- ❖ Over **three decades** of Programming, Planning & Design for **Public & Private Colleges & Universities**
- ❖ Experienced in **Postsecondary Facilities Planning**
- ❖ Recent involvement with **11 CA Community College Districts @ 18 Colleges**
- ❖ Recent CA Community College **Facilities Master Planning @ 9 Colleges**
- ❖ More than **800,000 s.f.** of CA Community College **construction** projects in the last **6 years**



CW/P + hpi architecture



**Palo Verde Community College**

Education Master Plan / Facilities Master Plan

# CLIENTS WE SERVE

## CA Community College Districts

- ❖ Coast Community College District
- ❖ Kern Community College District
- ❖ Long Beach Community College District
- ❖ Mt. San Antonio College District
- ❖ Cerritos Community College District
- ❖ Riverside Community College District
- ❖ El Camino College District
- ❖ Los Angeles Community College District
- ❖ Southwestern Community College District
- ❖ Rancho Santiago Community College District
- ❖ Barstow Community College
- ❖ Palo Verde Community College District
- ❖ Palomar Community College District
- ❖ San Jose Evergreen Community College District

CWP HPI

- ●
- ●
- ●
- ●
- ●
- ●
- ●
- ●
- ●
- ●
- ●
- ●
- ●
- ●

## CA Community Colleges

- ❖ Orange Coast College
- ❖ Golden West College
- ❖ Coastline College
- ❖ Bakersfield College
- ❖ Porterville College
- ❖ Cerro Coso College
- ❖ Long Beach City College – PCC
- ❖ Long Beach City College - LAC
- ❖ Mt. SAC
- ❖ Cerritos College
- ❖ Southwestern College
- ❖ Norco College
- ❖ El Camino College
- ❖ Pierce College
- ❖ Santa Ana College
- ❖ Santiago Canyon College
- ❖ Palomar College
- ❖ San Jose City College
- ❖ Evergreen Valley College

CWP HPI

- ●
- ●
- ●
- ●
- ●
- ●
- ●
- ●
- ●
- ●
- ●
- ●
- ●
- ●
- ●
- ●
- ●
- ●
- ●



**Palo Verde Community College**  
Education Master Plan / Facilities Master Plan



CW/P + hpi architecture

## GOALS

---

- ❖ Campus involvement in the process
- ❖ Provide the optimal physical setting to support the academic mission of the college
- ❖ Provide a blueprint for campus development and a resource for decision-making



## GUIDEING PRICIPLES

- ❖ All campus **planning begins with the program of instruction.**
- ❖ Planning must be built with & be **supported by the college community.**
- ❖ All plans must be **integrated into a unified whole** supporting the college's strategic plan.
- ❖ **Hands on approach** & the ability to implement the clients thoughts & ideas into working plans & finished products.



## GOALS & OBJECTIVES

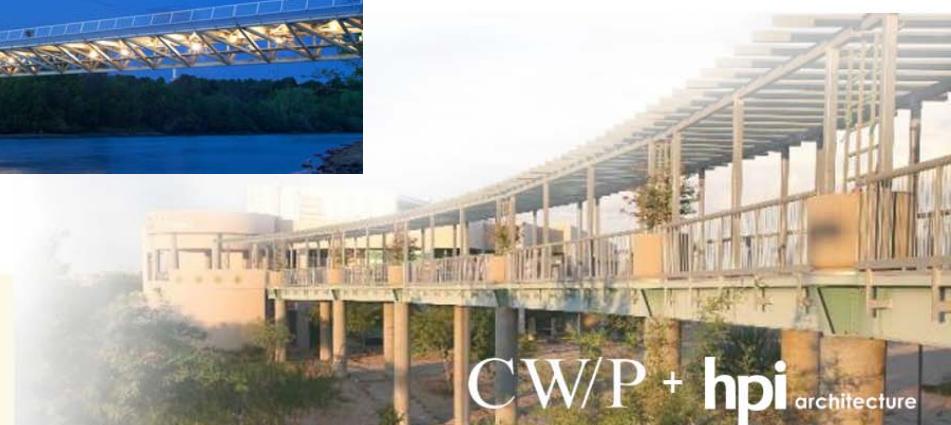
- ❖ Supporting student **access, learning & teaching**.
- ❖ Balancing & supporting **socialization & formal learning**.
- ❖ Creating **unique “places”**.
- ❖ Fostering **environmental responsibility**.
- ❖ Maintaining student **safety**.



# EMP & FMP APPROACH

---

- ❖ **Projections for the Future**
  - ❖ Future Capacity for Growth
  - ❖ WSCH Growth as Applied to the Future Program of Instruction
- ❖ **Bridging the EMP & FMP**





# EDUCATIONAL MASTER PLAN

---



**Palo Verde Community College**  
Education Master Plan / Facilities Master Plan



## TITLE 5 CHANGE (2007)

---

- ❖ T5 51008 Comprehensive Plan
- ❖ (a) The **governing board of a community college** district shall establish policies for, and approve comprehensive or master plans, which include academic master plans and long range master plans for facilities. *The content of such plans shall be locally determined ...*



# ACCREDITATION

---

- ❖ Recent accreditation activities now “look for” an EMP as part of integrated planning



**Palo Verde Community College**  
Education Master Plan / Facilities Master Plan



CW/P + hpi architecture

## PURPOSE OF THE EMP

---

- ❖ **Address Educational & Support Services Needs**
  - ❖ Facilities implications from enrollment growth projections
  - ❖ Mix of educational programs & match to service area



**Palo Verde Community College**  
Education Master Plan / Facilities Master Plan



CW/P + hpi architecture

## PURPOSE OF THE EMP

---

- ❖ **Review the learning environment for:**
  - ❖ Changes in teaching methodology & delivery of instruction
  - ❖ Potential new programs of instruction
  - ❖ Impacts of technology
- ❖ **Serves as a long-term planning document**
  - ❖ Perhaps revisited every six to seven years with the accreditation cycle



# EMP IS NOT...

---

## The same as a functional-level plan

- ❖ Technology
- ❖ Distance Education
- ❖ Student Success and Support Program
- ❖ Student Equity



# EMP OVERVIEW

---

1. Message from President
2. Introduction
3. College History & Overview
4. Mission, Vision, Values
5. Environmental Scan
  - A. External
  - B. Internal
6. Plan Assumptions and Strategic Priorities
7. Opportunities for the Future
8. Projections for the Future Growth



# PROCESS

---

- ❖ Selection & Kick Off- Fall 2015
- ❖ Fall 2015
  - ❖ Data collection & analysis, preliminary findings presentation
- ❖ Spring 2016
  - ❖ Interviews
  - ❖ Presentations to Planning & Budget Committee & Campus
  - ❖ Open house sessions
  - ❖ Academic Senate presentation
  - ❖ Board presentation





## DATA COLLECTION

---

- ❖ External data, documents, research
- ❖ Recent College plans, research, projects, program reviews
- ❖ Questionnaire and structured interviews (faculty & academic deans)
- ❖ Email exchanges (faculty & academic deans)
- ❖ Exchange of information with HPI (FMP)



## CORE QUESTIONS

---

*1. How much additional instructional space will Palo Verde College need into the future?*

*2. What might be the curriculum options to match labor market needs and transfer opportunities?*

But, wait there is more.....

**Accreditation considerations**



**Palo Verde Community College**  
Education Master Plan / Facilities Master Plan

CW/P + hpi architecture

# QUESTIONS

---



**Palo Verde Community College**  
Education Master Plan / Facilities Master Plan

CW/P + hpi architecture

## INTEGRATING EMP & FMP

---

- ❖ CWP & HPI are “married”
- ❖ Translation of space need corrections and projections future need from growth
- ❖ Articulation of new instructional or student support programs
- ❖ Understanding the campus vision



# FACILITIES MASTER PLAN

---



**Palo Verde Community College**  
Education Master Plan / Facilities Master Plan



CW/P + hpi architecture

## FMP APPROACH

---

Creating a framework of **systems** to support current & future **growth** & campus **improvement** : a roadmap bringing all projects together to serve **one vision**.



**Palo Verde Community College**  
Education Master Plan / Facilities Master Plan

CW/P + hpi architecture

# STRENGTHS, OPPORTUNITIES, WEAKNESS, THREATS

---

## campus systems & considerations

- ❖ Highest & Best Use of **Existing & Planned Facilities**
- ❖ **Campus Zoning**
- ❖ **Vehicular Access & Circulation**
- ❖ **Parking**
- ❖ **Public Transportation**
- ❖ **Utilities & Infrastructure**
- ❖ **Pedestrian Circulation**
- ❖ **Open Space Character**
- ❖ **Sustainability**
- ❖ **Project Sequencing**



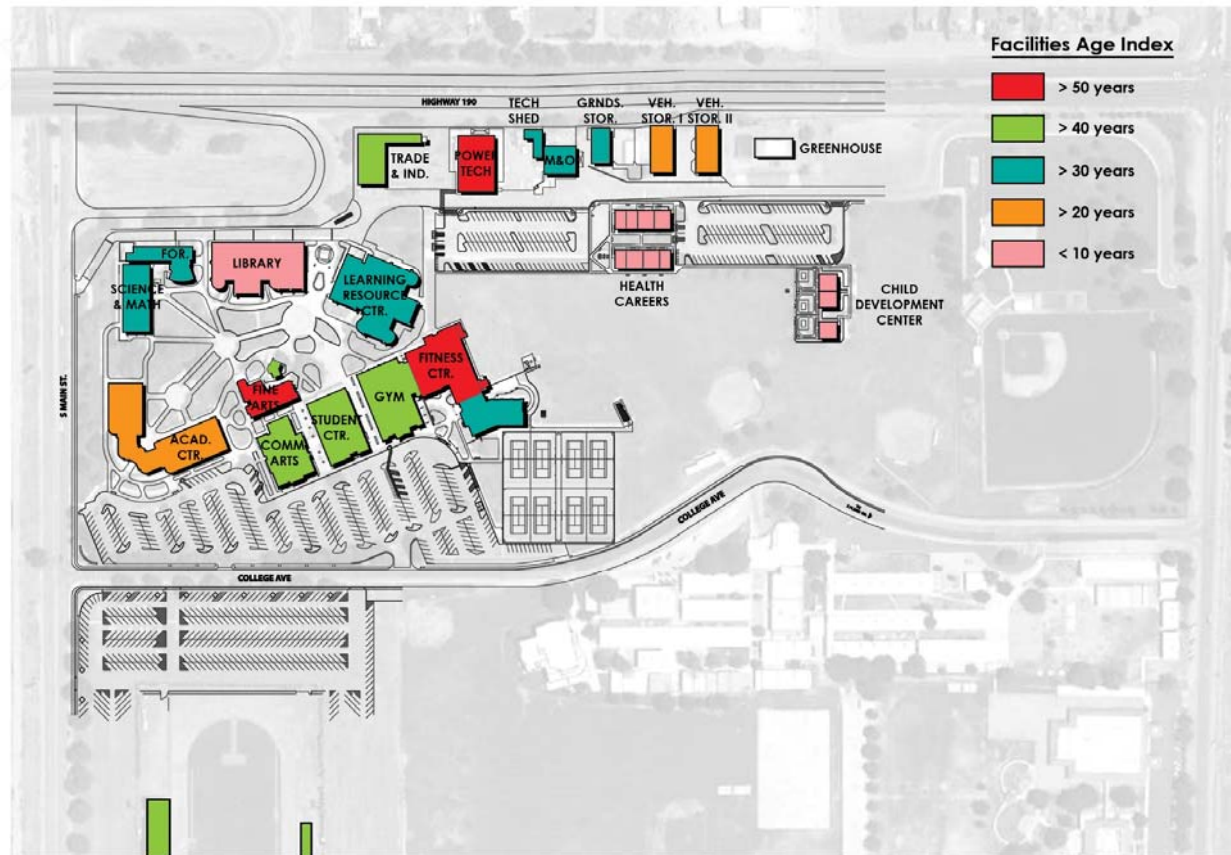
**Palo Verde Community College**

Education Master Plan / Facilities Master Plan

CW/P + hpi architecture

## building age

- Age of buildings
- Age of infrastructure
- Campus zoning
- Space efficiency
- Operational efficiency



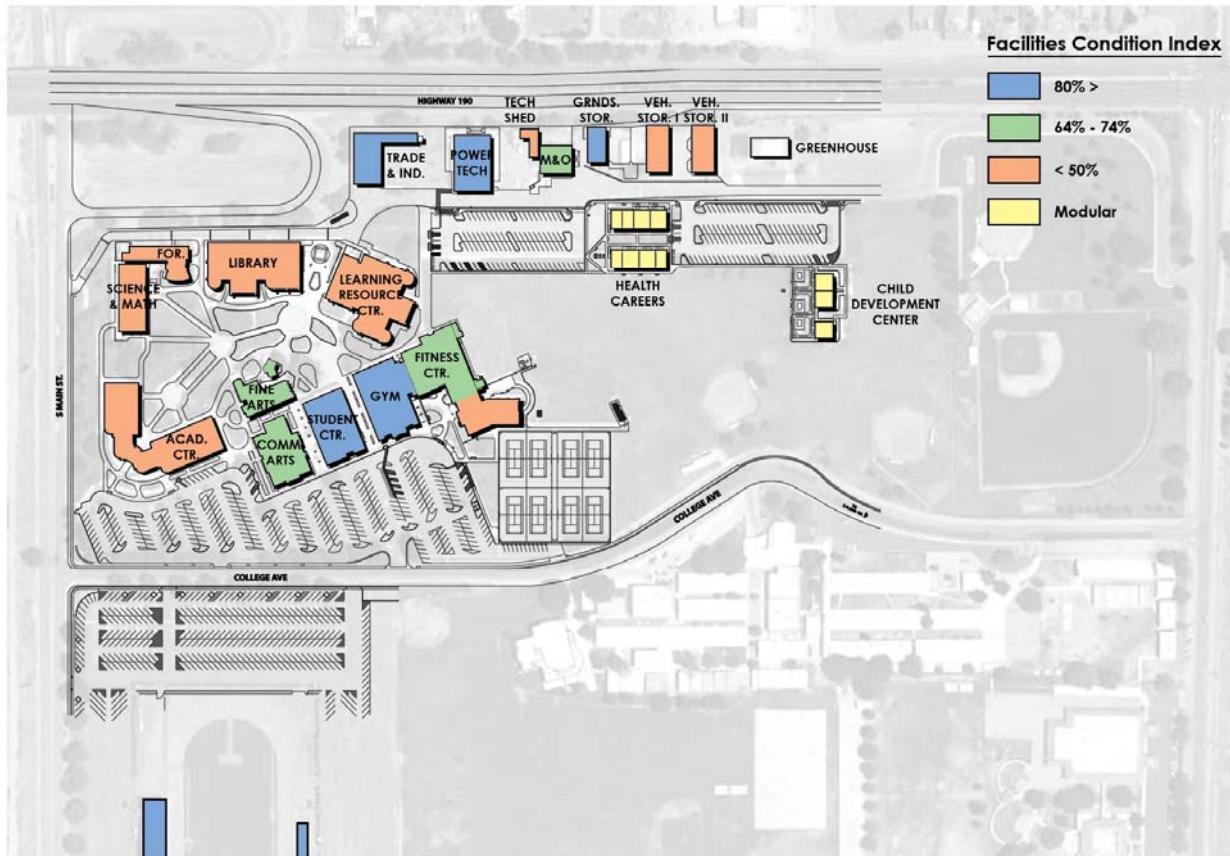
**Palo Verde Community College**  
Education Master Plan / Facilities Master Plan



CW/P + hpi architecture



## facilities condition analysis

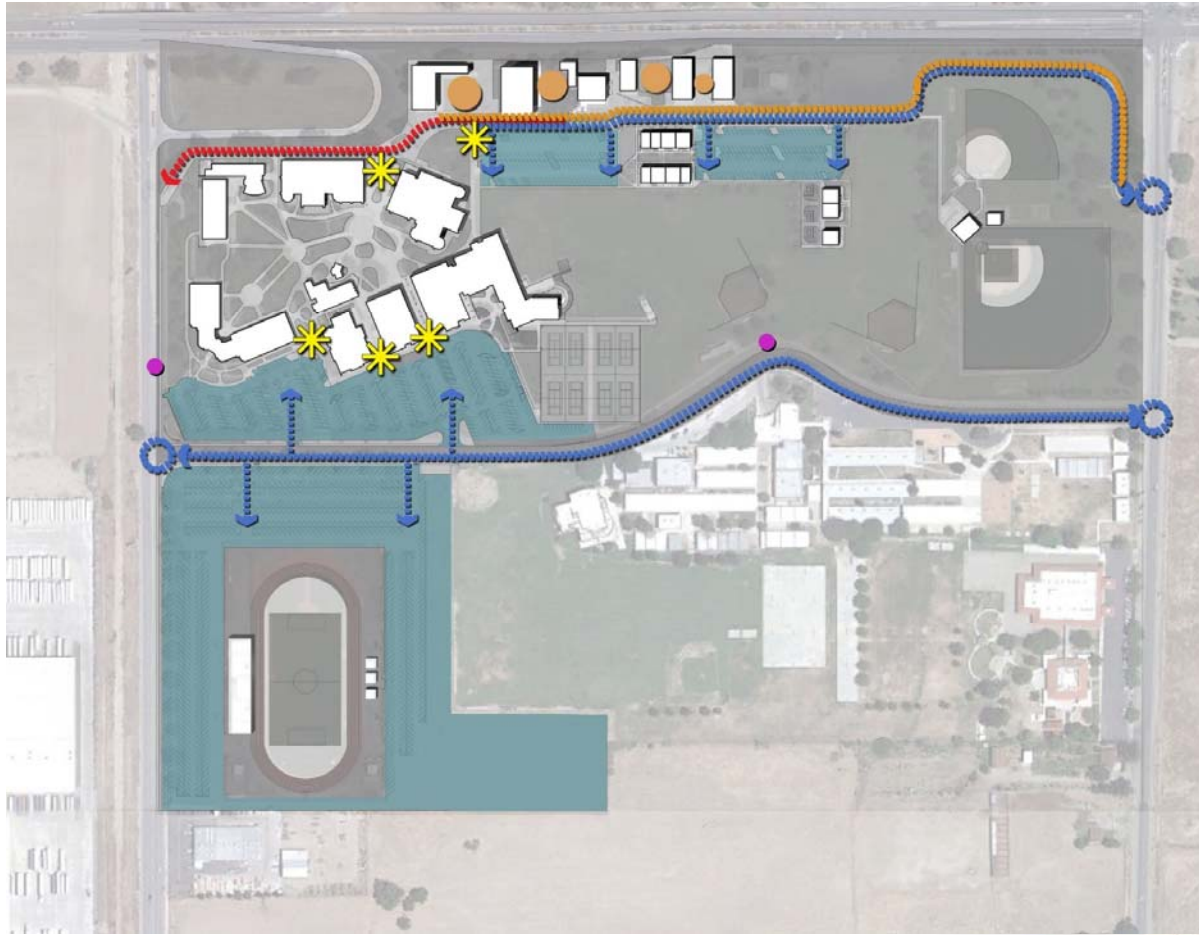


- Condition of buildings
- Condition of infrastructure
- Campus zoning
- Space efficiency
- Operational efficiency



**Palo Verde Community College**  
Education Master Plan / Facilities Master Plan

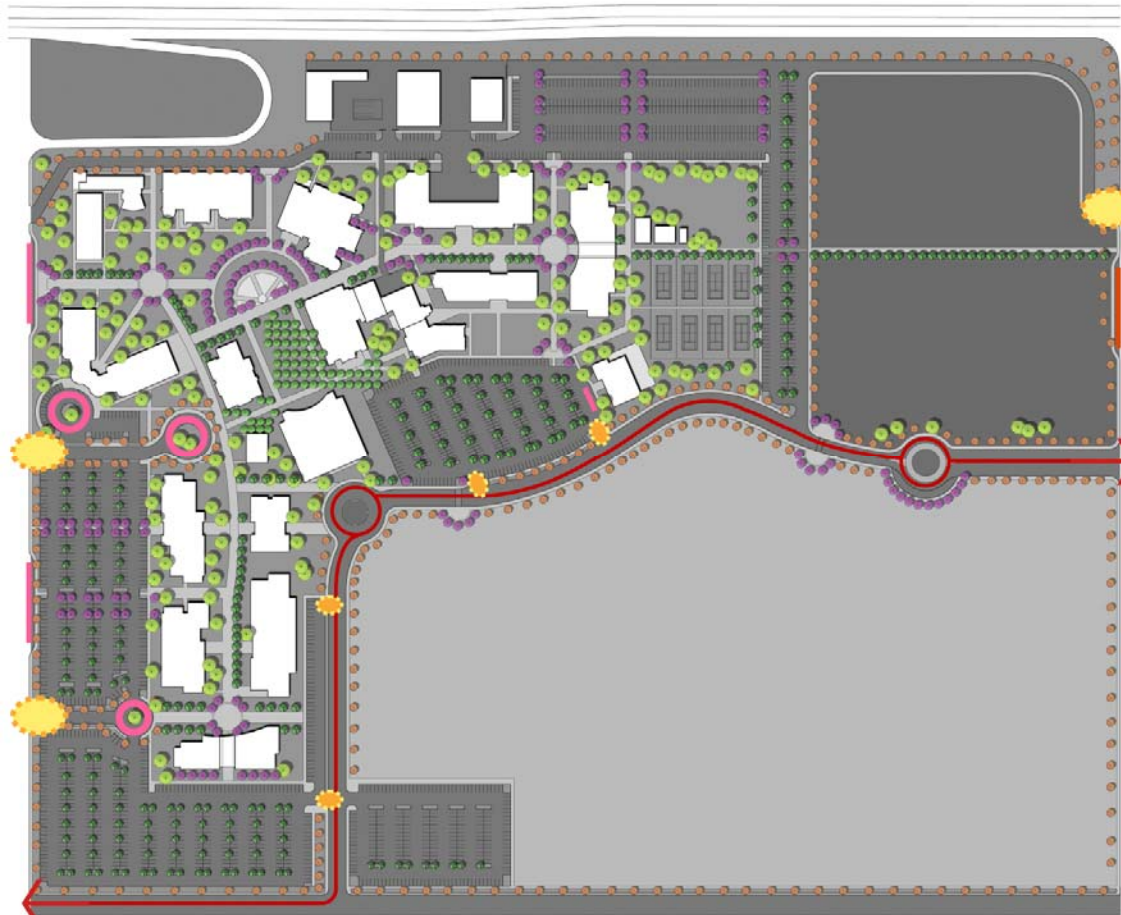
CW/P + hpi architecture



campus access

- Bifurcated campus
- Unevenly distributed parking
- Lack of identity at "Front Door"

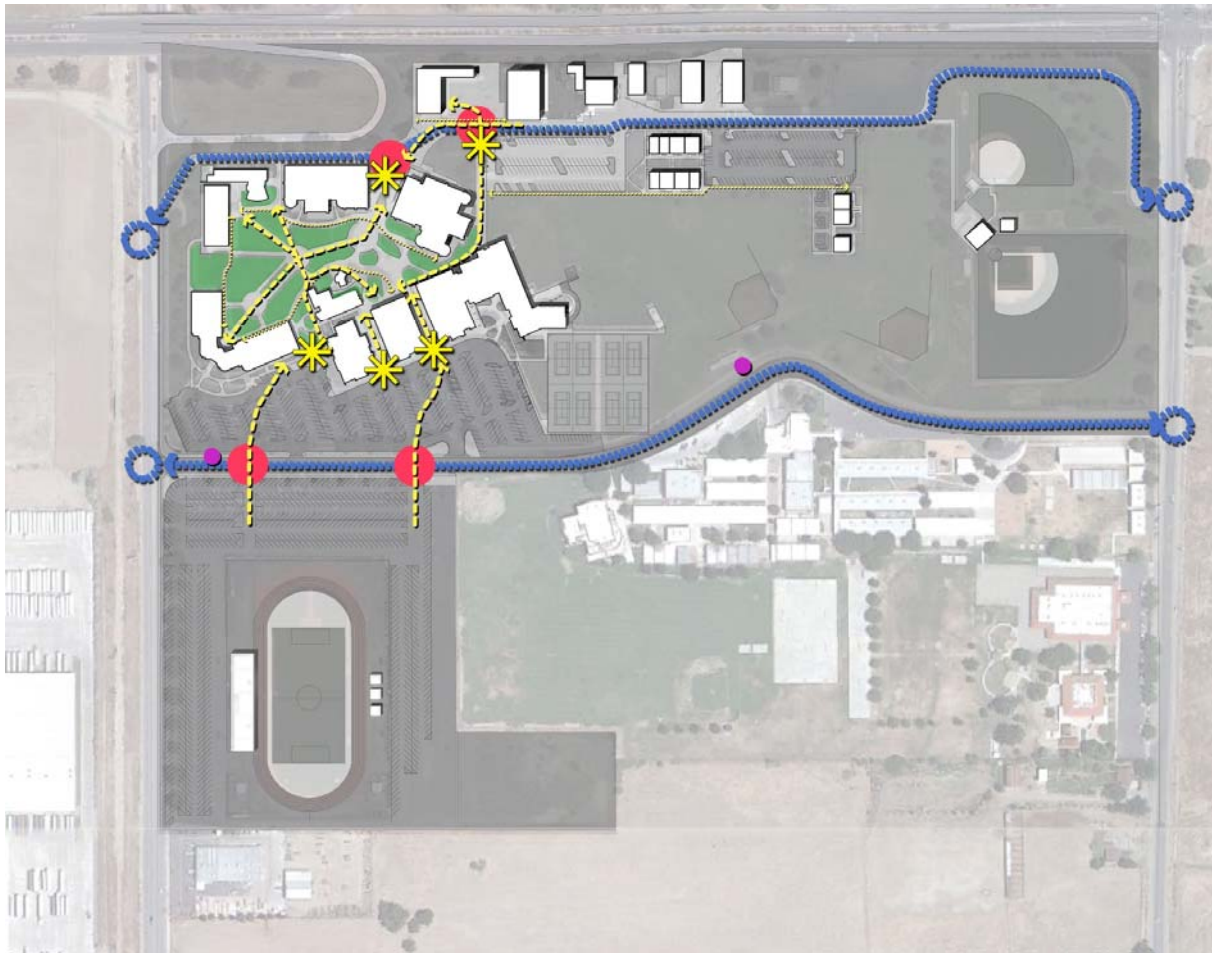




**campus access**

- Re-defined roadway
- Re-distributed parking
- New front door
- Multiple drop - offs





pedestrian circulation

Lack of "Campus Core"

Restricted pedestrian circulation



**Palo Verde Community College**  
Education Master Plan / Facilities Master Plan

CW/P + hpi architecture



pedestrian circulation

- Hierarchy of open space
- Defined path of travel
- Spaces for student gatherings
- Bike path





program of work

- Renovation / Repurpose / New
- Sequence
- Cost / TCO



**Palo Verde Community College**  
Education Master Plan / Facilities Master Plan



CW/P + hpi architecture

# Planning & Zoning

## Wellness Complex

Programs:

- Wellness Center
- Gym
- Pool Facilities

ASF / GSF / Mass:

37,800 ASF / 54,000 GSF / 2 Stories

Timeline:

2014 – 2016

Vacates:

Gymnasium, Pools, Racquetball,  
Bldgs: 1000, 1006, 2008

## Math / Science Complex

Buildings:

1. Math Science Building
2. Planetarium / Exhibit / Large Lecture Building

ASF / GSF / Mass:

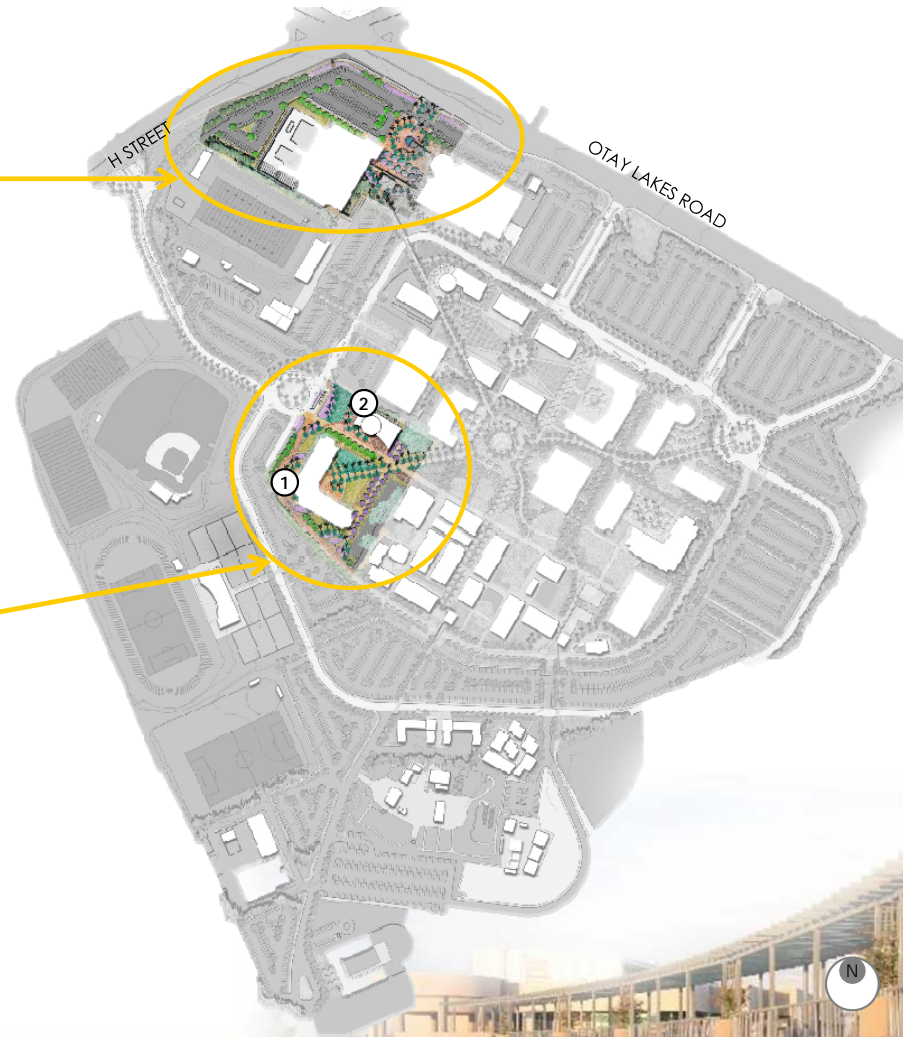
1. 59,720ASF / 91,880 GSF / 2 Stories
2. 7,300ASF / 11,250 SF / 1 Story

Timeline:

2016 – 2018

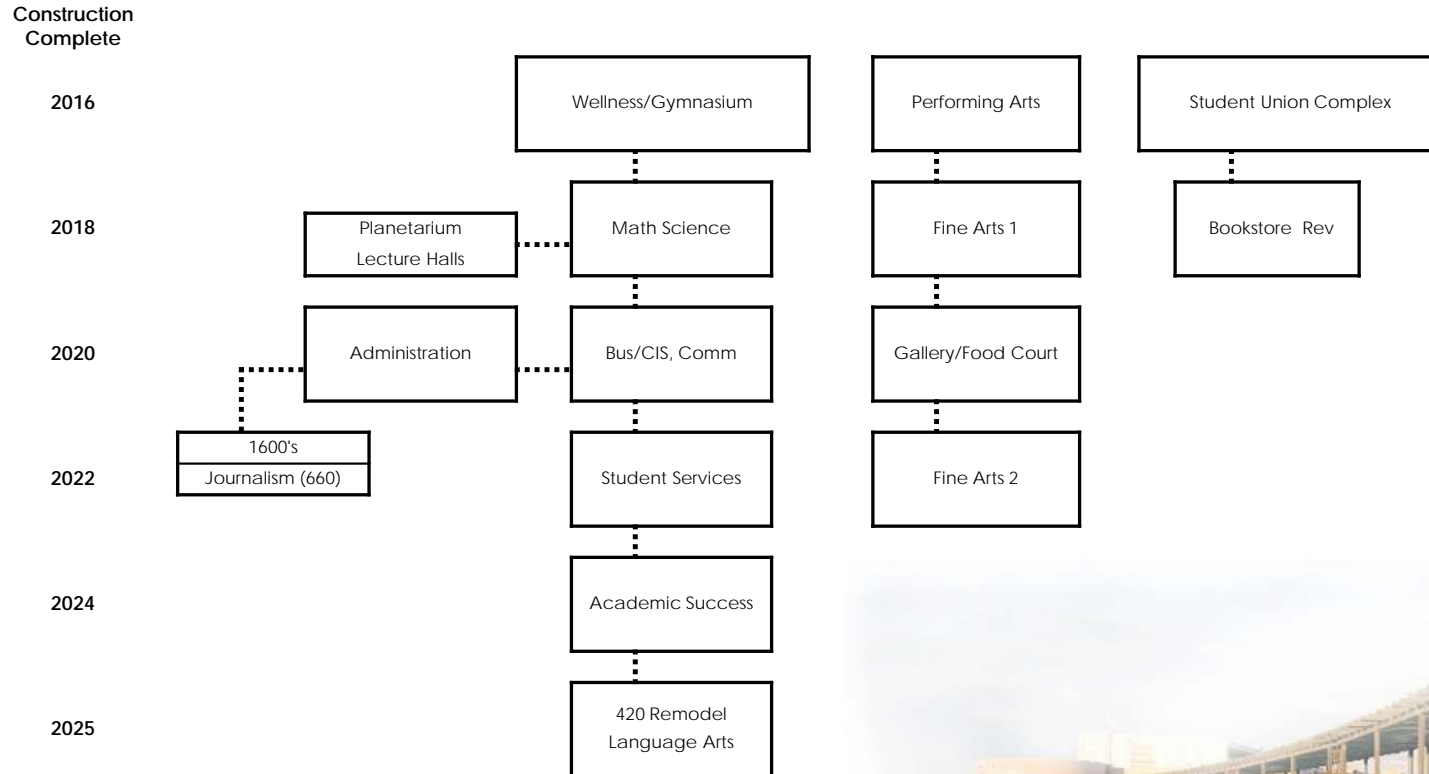
Vacates:

300's & Various Classrooms on Campus



# Campus Vision

required project sequencing





# TIME LINE

---

2015	October	Education / Facility Master Plan kick-off
	Fall	EMP: Data Collection FMP: Data Collection
2016	Winter	FMP: SWOT Analysis / Draft 1 Review
	Spring	EMP: Interviews Presentations to Steering Committee & Campus Open house sessions Academic Senate presentation Board presentation FMP: Final Draft Review
	June	EMP & FMP: Presentation to the SJECCD Board of Trustees



**Palo Verde Community College**  
Education Master Plan / Facilities Master Plan

CW/P + hpi architecture

DISCUSSION:  
QUESTIONS & ANSWERS



**Palo Verde Community College**  
Education Master Plan / Facilities Master Plan



CW/P + hpi architecture